

# SPEC SHEET + MEASUREMENTS

**SPORT-TEK**

## Sport-Tek® Colorblock Raglan Anorak. JST63

### Product photo



Sporty colorblocking and a 1/2-zip front make this soft, water-repellent anorak an excellent alternative to a wind shirt or jacket.

- 100% polyester shell
- 100% polyester jersey lining with mesh insets at gussets
- Three-panel hood with drawcord and toggle
- Raglan sleeves
- Front pouch pocket
- Articulated elbows for greater mobility
- Half elastic, half self-fabric cuffs for comfort
- Left side seam zipper for easy on/off
- Drawcord hem with toggle

Please note: This product is transitioning from woven labels to tag-free labels. Your order may contain a combination of both labels.

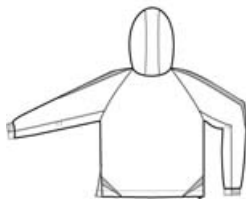
### CARE INSTRUCTIONS

Machine wash cold. Gentle cycle with like colors. Use mild detergent, remove immediately. Do not allow to lay on itself when wet. Do not bleach. Tumble dry low. Cool iron, if needed.

### Sketches



front



back

# SPEC SHEET + MEASUREMENTS

**SPORT-TEK**

Sport-Tek® Colorblock Raglan Anorak. JST63

## PRODUCT MEASUREMENTS

	XS	S	M	L	XL	2XL	3XL	4XL	5XL	6XL
Chest	21	22 1/2	24	25 1/2	27	28 1/2	30	31 1/2	33	34 1/2
Sleeve Length	33 1/2	34 1/2	35 1/2	36 1/2	37 1/2	38 1/2	39 1/2	40 1/2	41 1/2	42 1/2
Body Length at Back	26	27	28	29	30	31	32	33	34	35

**Chest:** Measured across the chest one inch below armhole when laid flat.

**Sleeve Length:** Start at center of neck and measure down shoulder, down sleeve to hem.

**Body Length at Back:** Measured from high point shoulder to finished hem at back.

## SIZE CHARTS

	XS	S	M	L	XL	2XL	3XL	4XL	5XL	6XL	7XL	8XL	9XL	10XL
Chest	32-34	35-37	38-40	41-43	44-46	47-49	50-52	54-57	58-60	61-63	64-66	67-69	70-72	73-75

# SPEC SHEET + MEASUREMENTS



Sport-Tek® Colorblock Raglan Anorak. JST63

## HOW TO MEASURE

---



### CHEST

Measure under the arm and around the fullest part of the chest with arms down, keeping tape horizontal.

## COLORS

---



Black/ White  
PMS BLACK  
C



True Navy/  
White  
PMS 533C



True Royal/  
White  
PMS 7687C